

# Wallace Community College Selma

## Fact Book

### 2019-2020



Published by the Office of Institutional Effectiveness and Research  
Veronica Brown, Director of Institutional Effectiveness and Research  
Office of Institutional Effectiveness and Research  
Hank Sanders Technology Center  
334-876-9241  
August 2021

## Table of Contents

President’s Message.....	page 3
Vision, Mission, and Goals.....	page 4
History of the College.....	page 5
Organizational Chart.....	page 6
College Committees.....	page 7
Executive Summary.....	page 8
Admissions and Enrollment.....	page 9
Academic.....	page 14
Student Financial Information.....	page 16
Faculty and Staff.....	page 17

# Building Bridges to the Future

## President's Message

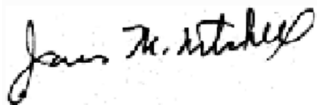
On behalf of Wallace Community College Selma (WCCS), I present to you our Fact Book. As president, I am proud of the contributions the College makes to the quality of life in the City of Selma and the surrounding counties. The College's faculty, staff, and administration are dedicated to the values that distinguish WCCS' unique role in higher education and make the College a critical community resource—access to educational opportunities, affordability, quality, diversity, and strong student success services. I am proud that WCCS continues to have a far-reaching positive impact upon students of all ages.

WCCS is fully accredited and widely regarded as one of the finest community colleges in the state and nation. WCCS is known for its academic rigor, outstanding technical training programs, superb faculty, comprehensive student services, community outreach, and excellent facilities.

If your educational goal is to attain a degree, prepare for transfer, get a new job or advance in your chosen career, WCCS is your college. WCCS is "Building Bridges to the Future" through innovative, flexible, and high-quality programs. As we continue to expand our mission and goals by meeting the needs of our students and the community, I am certain that the variety of academic programs and career-training we offer at WCCS will suit your goals and your passion.

Through the years, over 17,220 graduates have gained the knowledge and skills they need to earn their associate degrees, transfer to a four-year institution of higher education or enter the work force. I encourage you to browse our website ([www.wccs.edu](http://www.wccs.edu)) and seriously consider Wallace Community College Selma.

Sincerely,

A handwritten signature in black ink, appearing to read "James M. Mitchell". The signature is written in a cursive style and is positioned above the printed name.

James M. Mitchell, Ed.D.  
President

## VISION

The College shares a vision of a learning-centered education that is responsive to the needs of our service area and is manifested by quality teaching, opportunities for learning, effective educational support services, and access to a quality education. Challenged by change and innovation, the College will move forward to create a future responsive to the diverse needs of students, community, and state.

## PHILOSOPHY

The philosophy of Wallace Community College Selma is expressed in the following beliefs:

- Education is essential to the economic, social, environmental, and political well-being of the citizens of West Central Alabama,
- Education should be made academically, geographically, physically, and financially accessible to all students,
- Wallace Community College Selma is uniquely qualified to deliver excellent and equitable educational opportunities and services,
- Quality education requires unity and cooperation of all stakeholders who work together toward a common goal.

## MISSION

The mission of Wallace Community College Selma is to provide high-quality, learning-centered educational opportunities and services through diverse instructional-delivery modes that are responsive to individual, community, state, and global needs.

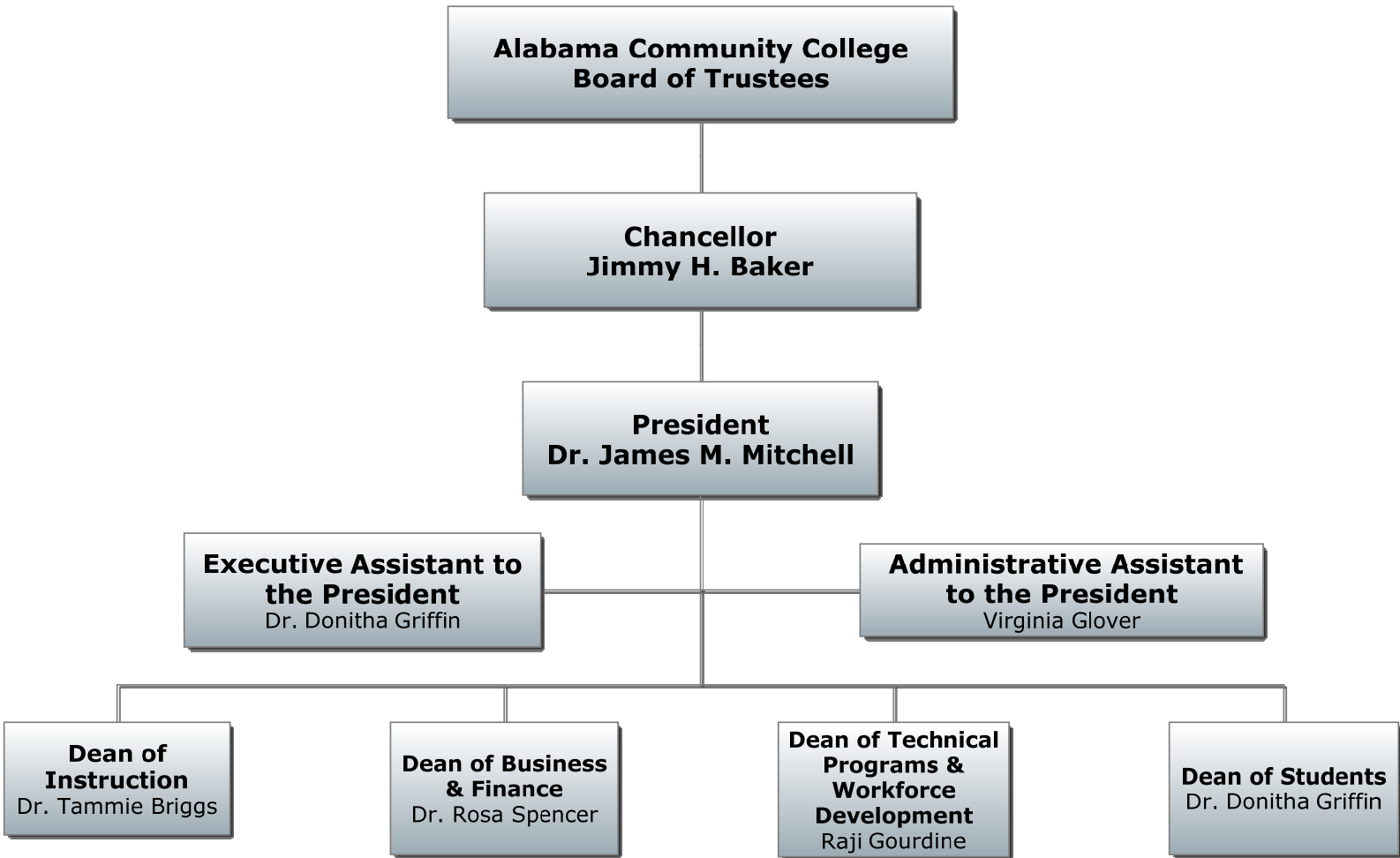
## COLLEGE GOALS

1. Promote and provide quality, teaching and learning environments and experiences that enhances the development of knowledge, skills, behaviors, and values for students and enables them to be successful in the workforce or subsequent education. **(Teaching and Learning)**
2. Promote high quality student experiences through services consistent with student needs, interests and abilities that lead to student development and success. **(Student Focus / Services Success)**
3. Broaden the development of educational and administrative technology that enhances student learning and improve college management processes and functions. **(Technology)**
4. Provide high quality workforce development programs that meet the needs of businesses and industries and enhance the economic development efforts of the region and the state. **(Workforce/Economic Development)**
5. Foster key relationships with community leaders to support community engagement and development efforts in the college's service area. **(Community Engagement / Development)**
6. Provide an Adult Education program that alleviate educational gaps and help participants gain economic and social mobility. **(Adult Education)**
7. Implement a strategic enrollment management plan that has a positive impact on the college's financial stability **(Enrollment)**
8. Improve efficient operations of the College. **(Efficiency of Operations)**

## History of Wallace Community College Selma

- 1963 - George Corley Wallace State Community College had its origin as William Rufus King State Vocational Technical School
- 1973 - Alabama State Board of Education authorized the second change of the institution's name to George Corley Wallace State Community College and the Associates in Arts and Associates in Sciences programs were offered
- 1974 - Institutional accreditation was granted by the Southern Association of College and Schools Commission on Colleges (SACSCOC)
- 1982 - The Associate Degree in Nursing was accredited by the Accreditation Commission for Education in Nursing (ACEN)
- 1984 - The Practical Nursing Program was accredited by the Accreditation Commission for Education in Nursing (ACEN)
- 1990 - Under the administration of President Dr. Julius Brown, the marketing name of the College became Wallace Community College Selma (WCCS)
- 2000 - Dr. James M. Mitchell became the third and most visionary president
- 2002 - WCCS started a Dual Enrollment Program, allowing high school students to get a jump start on their college career
- 2005 - WCCS became the only community college to be named an AMSTI site
- 2007 - WCCS partnered with SECME, the Bill and Melinda Gates Foundation, Jobs for the Future, and the Selma City School System to house the first Early College Program in the State of Alabama
- 2009 - WCCS was approved by the Southern Association of College and Schools Commission on Colleges to offer distance education
- 2010 - WCCS was approved by the Southern Association of College and Schools Commission on College to offer the AS and AA degrees fully online
- 2015 - The Associates Degrees in Applied Science in Business Administration, Computer Information Systems, and Office Administration were accredited by Accreditation Council for Business Schools and Programs
- 2019 - WCCS expanded its service area to include Autauga, Chilton, Dallas, Greene, Hale, Lowndes, Marengo, Perry, Sumter, and Wilcox counties
- 2019 - WCCS opened an offsite campus in Demopolis, AL offering career technical educational programs
- 2019 - WCCS was selected as the first college to house a Best Buy Teen Tech Center

**Organizational Chart**



## College Committees

Administrative Advisory Committee  
Policy Review Committee  
Admissions Appeals Committee  
Calendar/Registration Committee  
Athletics Committee  
Scholarship Committee  
Library Committee  
Graduation Committee  
Student Activities Committee  
Campus Beautification Committee  
Financial Aid Academic Progress Appeals Committee  
Grievance Committee  
Strategic Planning Council

### College Goal 1 Teaching and Learning

Curriculum Committee  
Substantive Change Committee

### College Goal 2 Student Focus / Services Success

Transitional Studies Task Force Committee  
E-Learning Policy Advisory Committee

### College Goal 3 Technology

### College Goal 4 Workforce / Economic Development

### College Goal 5 Community Engagement / Development

Recruitment/Marketing Committee

### College Goal 6 Adult Education

### College Goal 7 Enrollment

Admissions

### Goal 8 Efficiency of Operations

Catalog/Student Handbook Committee  
Health and Safety Committee  
Faculty/Staff Handbook Committee  
Facility Master Plan Committee  
IEP Assessment Committee

## Executive Summary

George Corley Wallace State Community College (WCCS) enrolled 1,316 students in Fall 2020. The majority of students enrolled were women (65%), Black or African American (75%), and enrolled part-time (65%). Because of an increase in dual enrolled high school students, 28% of students are age 18-19 and 29% are under age 18.

WCCS enrolled 235 first time freshmen in Fall 2020. The majority were enrolled full time (76%), Black or African American (75%) and were 59% women and 41% men.

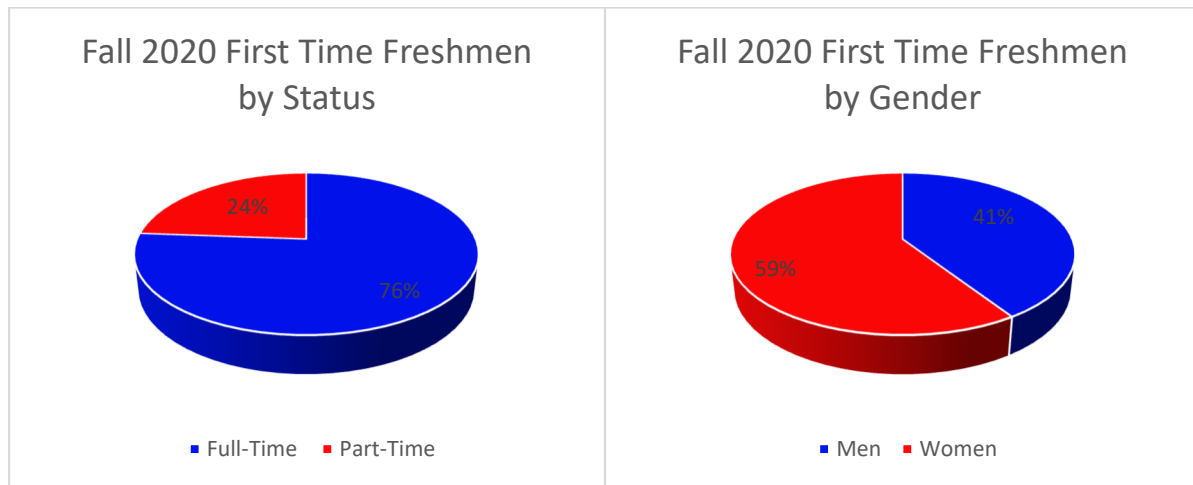
The most popular majors were the Associates in Science, Associates in Nursing, and Welding. In Fall 2020, there were 303 class sections offered that produced 11,469 credit hours. The annual credit hour production for Fall 2020, Spring 2021, and Summer 2021 was 29,057. WCCS awarded 391 degrees in Summer 2019, Fall 2019, and Spring 2020. Of the 391 degrees awarded, 30% were certificates and 70% were Associates degrees.

Students received a total of \$1,940,512.57 in financial aid, with 635 students receiving \$1,416,728.00 in Pell Grants, for an average dispersment of \$2,241.66.

In Fall 2020, WCCS employed 228 faculty and staff. Of the total faculty and staff, 21% were full time faculty, 21% were part time faculty, 39% were full time staff, and 19% were part time staff.

## Admissions and Enrollment

Fall 2020 First Time Freshmen				
	Full-Time		Part-Time	
	Men	Women	Men	Women
Black or African American	51	86	12	27
White	26	13	6	11
Hispanic/Latino		1		
Two or More Races	1	1		
<b>Total</b>	<b>78</b>	<b>101</b>	<b>18</b>	<b>38</b>
<b>Total Full-Time/Part-Time</b>	179		56	
<b>Grand Total</b>	235			



Retention Rates of First Time Degree Seeking Freshmen	
Fall 2019 FT Cohort	242
Enrolled Fall 2020	139
<b>Retention Rate</b>	<b>57%</b>
Fall 2019 PT Cohort	35
Enrolled Fall 2020	6
<b>Retention Rate</b>	<b>17%</b>
Fall 2019 Cohort	277
Enrolled Fall 2020	145
<b>Retention Rate</b>	<b>52%</b>

Fall 2020 First Generation College Students	
349	26.5%

Fall 2020 Enrollment by Major	
Program Name	Headcount
Computer Information Systems	19
Cosmetology	9
Drafting and Design	9
Associate in Arts	20
Associate in Science	455
Criminal Justice	3
Masonry	17
Electrical Technology	30
Industrial Maintenance Technology	11
Welding	100
Associate Degree Nursing	125
Practical Nursing	56
Patient Care Technician	15
Business Administration	43
Office Administration	8
Undeclared	396
<b>Total</b>	<b>1,316</b>

Fall 2020 Enrollment by State	
AL	1,294
FL	4
GA	8
MD	2
MS	1
TX	1
Unknown or International	9
<b>Total</b>	<b>1,316</b>

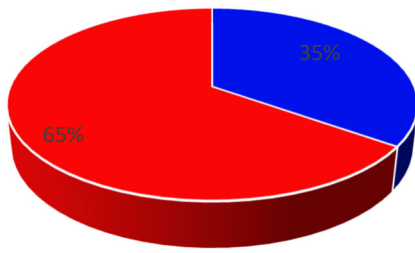
Fall 2020 Class Sections and Credit Hour Production		
	Sections	CHP
Traditional	214	5,750
E-Learning	89	5,719
<b>Total</b>	<b>303</b>	<b>11,469</b>

Fall 2020 Enrollment by Classification and Degree						
	AA	AAS	AS	CER	NDS	Total
Non-degree seeking undergraduate					12	12
Freshman	8	56	219	59		342
Sophomore	12	180	236	146		574
High school student					388	388
<b>Total</b>	20	236	455	205	400	1,316

Fall 2020 Enrollment by Age Range and Enrollment Status				
	Full-Time	Part-Time	Total	%
Under 18	11	369	380	29%
18-19	258	104	362	28%
20-21	79	77	156	12%
22-24	39	70	109	8%
25-29	36	81	127	10%
30-34	12	55	67	5%
35-39	11	41	52	4%
40-49	11	39	50	4%
50-64	1	12	13	1%
65 and Over	-	-	-	0%
<b>Total</b>	458	585	1,316	100%
<b>Age 24 and under</b>	84%	72%	77%	
<b>Age 25 and over</b>	16%	28%	23%	
<b>Average Age</b>			22.0	

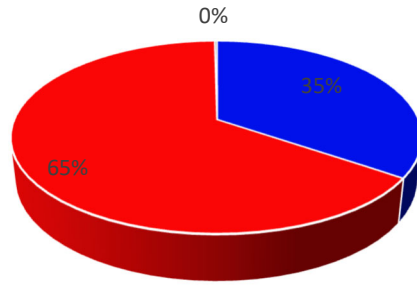
Fall 2020 Enrollment by Status, Gender, and Ethnicity							
	Full-Time			Part-Time			Total
	Men	Women	Unknown	Men	Women	Unknown	
American Indian					1		1
Asian			1	1	1		3
Black or African American	125	228		203	432	2	990
Hispanic/Latino		3		2	6		11
Non-Resident Alien	2	1			3		6
Pacific Islander				1			1
White	46	38		64	123		271
Two or More Races	3	7		5	9		24
Unknown	2	2		1	4		9
<b>Total</b>	178	279	1	277	579	2	1,316

Fall 2020 Fnrrollment by Status



■ Full-Time ■ Part-Time

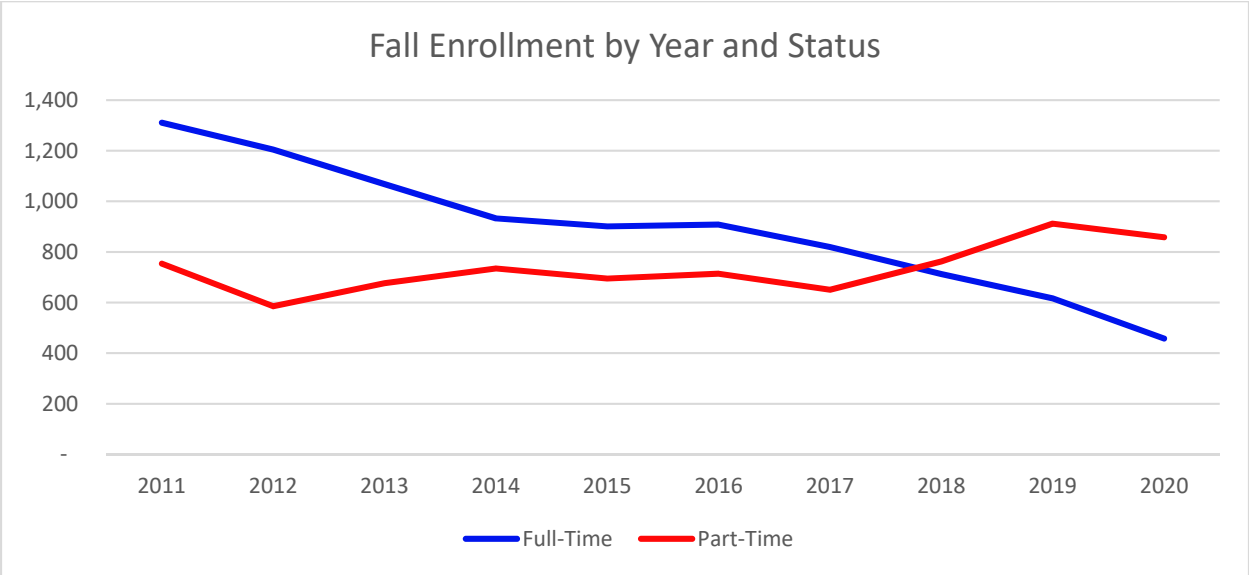
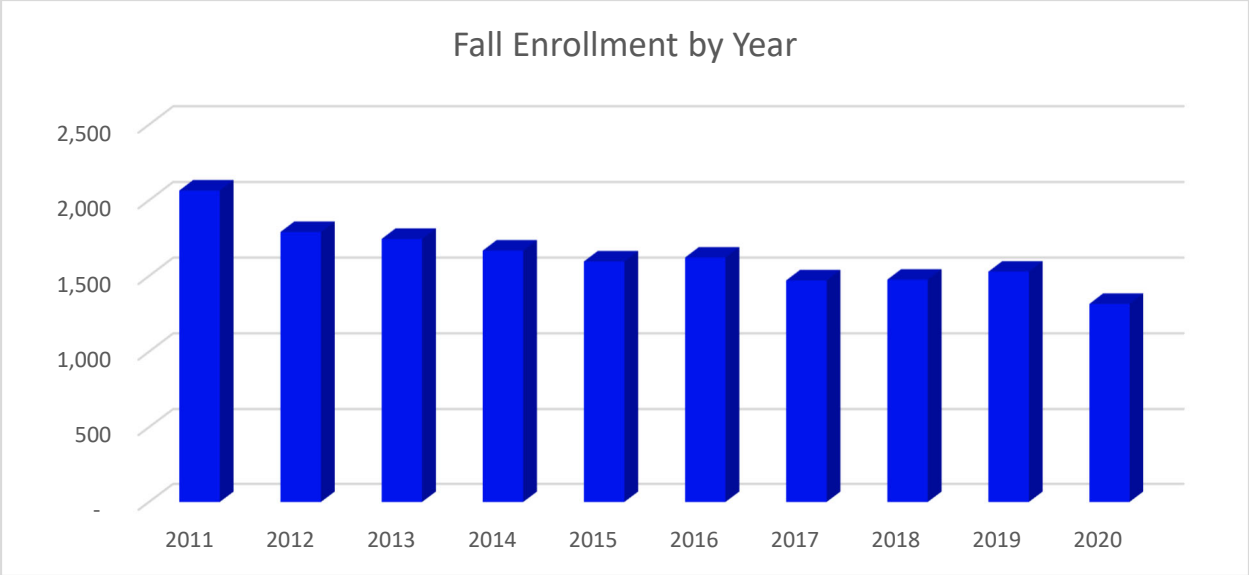
Fall 2020 Fnrrollment by Gender



■ Men ■ Women ■ Unknown

Fall Enrollment by Year and Status

	Full-Time	Part-Time	Total
2010	1,341	775	2,116
2011	1,311	754	2,065
2012	1,205	586	1,791
2013	1,068	677	1,745
2014	933	735	1,668
2015	901	695	1,596
2016	908	714	1,622
2017	820	651	1,471
2018	713	763	1,476
2019	617	912	1,529
2020	458	858	1,316



## Academic

Fall 2020, Spring 2021, and Summer 2021 Credit Hour Production				
Department Code (CIP Code)	Fall 2020	Spring 2021	Summer 2021	Total
ACR (150501)	30	108		138
BIO (260101)	1,144	1,224	880	3,248
BUS (520201)	384	396	81	861
CHM (400501)	48	76	72	196
CIS (110101)	591	441	402	1,434
COS (120401)	135	120	138	393
CRJ (430107)	27			27
DDT (151301)	153	165	78	396
ECO (450601)	180	147	96	423
ELT (460302)	276	228	192	696
ENG (230101)	1,152	1,146	972	3,270
ENR (320199)	40	20		60
HED (340199)	429	285	117	831
HIS (540101)	675	642	693	2,010
HPS (519999)	231	201	63	495
INT (470303)	117	105	39	261
LBS (250101)	15	7	2	24
MAH (270101)	117	78	39	234
MAS (460101)	210	189	153	552
MTH (270101)	785	570	576	1,831
MUS (500902)	465	441	183	1,089
NAS (513902)	74	140	40	254
NUR (513801)	1,215	1,423	484	3,122
OAD (520401)	54	57		111
ORI (370103)	208	142	66	416
PED (340103)	29	8		37
PHL (380101)	96	69	39	204
POL (451001)	12	36		48
PSY (420101)	423	531	228	1,182
REL (380201)	165	213	102	480
SOC (451101)	63	36	54	153
SPC (231001)			15	15
SPH (231001)	345	429	207	981
WDT (480508)	1,581	1,284	720	3,585
<b>Totals</b>	<b>11,469</b>	<b>10,957</b>	<b>6,631</b>	<b>29,057</b>

<b>Degrees Awarded - Summer 2019, Fall 2019, and Spring 2020</b>					
<b>Program</b>	<b>AA</b>	<b>AAS</b>	<b>AS</b>	<b>CER</b>	<b>STC</b>
Computer Information Systems		5		1	
Cosmetology				4	
Drafting and Design		3		5	
Associate in Arts	61				
Associate in Science			126		
Masonry				4	4
Electrical Technology		5		7	
Industrial Maintenance Technology		2		4	
Welding				55	
Associate Degree Nursing		57			
Practical Nursing				27	
Patient Care Technician				4	
Business Administration		13			
Office Administration		2		1	1
<b>Total</b>	<b>61</b>	<b>87</b>	<b>126</b>	<b>112</b>	<b>5</b>

<b>Degrees Awarded by Year and Level</b>			
	<b>Certificates</b>	<b>Associates</b>	<b>Total</b>
<b>SU 2017, FA 2017, SP 2018</b>	215	259	474
<b>SU 2018, FA 2018, SP 2019</b>	168	293	461
<b>SU 2019, FA 2019, SP 2020</b>	117	274	391

<b>Fall 2020 Students Enrolled in Remedial Courses</b>	
<b>Math Only</b>	32
<b>English Only</b>	3
<b>Math and English</b>	7

### Student Financial Information

In State Annual Student Tuition and Fees		
2020	2019	2018
\$152 per credit hour X 24 credit hours	\$150 per credit hour X 24 credit hours	\$148 per credit hour X 24 credit hours
\$3,648.00	\$3,600.00	\$3,552.00

Fall 2020 Student Financial Aid	
<b>Received</b>	916
<b>Not Received</b>	400

Fall 2020 Student Financial Aid				
Student Aid Name	Category	Amount	Headcount*	Average Aid
Federal Work Study	FEDR - Federal grants	\$16,329.78	12	\$1,360.82
Pell Grant	FEDR - Federal grants	\$1,416,728.00	632	\$2,241.66
Supplemental Educational Opportunity Grant	FEDR - Federal grants	\$58,800.00	78	\$750.00
Institutional Scholarship	INST - Institutional grants	\$30,927.00	16	\$1,932.94
Employee Dependent Waiver	INST - Institutional grants	\$14,630.00	13	\$1,125.38
Gear Up Alabama Children	INST - Institutional grants	\$6,672.00	4	\$1,668.00
Athletic Scholarship	INST - Institutional grants	\$146,390.02	45	\$3,253.11
Alabama Student Assistance Program	STLC - State/local grants	\$13,500.00	18	\$750.00
Career Technical Dual Enrollment Scholarship	STLC - State/local grants	\$236,835.77	247	\$958.85
<b>Total</b>		<b>\$1,940,512.57</b>		

**\*Note: Students may be counted in multiple types of student aid.**

## Faculty and Staff

Fall 2020 Faculty and Staff Profile					
	FT Faculty	PT Faculty	FT Staff	PT Staff	Total
<b>American Indian/Alaskan Native</b>		0			0
<b>Black or African American</b>	38	27	74	30	169
<b>White</b>	5	14	7	7	33
<b>Unknown</b>	4	6	7	7	24
<b>Two or More Races</b>	1	1			2
<b>Total</b>	48	48	88	44	228

Faculty and Staff by Employment Status by Occupational Category				
	2020		2019	
	Full-Time	Part-Time	Full-Time	Part-Time
Business and Financial Operations	3	0	4	0
Community Service Legal Arts and Media	4	9	5	9
Computer Engineering and Science	2	0	2	0
Instructional research and public service	48	48	46	53
Librarians Curators Archivists and Student and Academic Affairs and Other Education Services	16	0	13	2
Management	19	6	16	4
Natural Resources Construction and Maintenance	1	0	1	0
Office and Administrative Support	35	12	33	8
Production Transportation and Material Moving	1	0	0	0
Service Occupations	7	17	10	22
<b>Total</b>	<b>136</b>	<b>92</b>	<b>130</b>	<b>98</b>
<b>Grand Total</b>	<b>228</b>		<b>228</b>	