

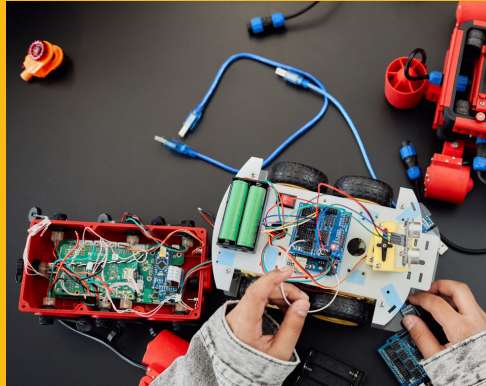
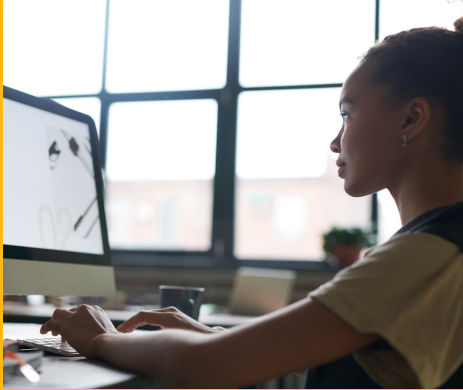


BEST BUY TEEN TECH CENTER



@

WALLACE COMMUNITY COLLEGE SELMA



**WHERE
TECHNOLOGY
MEETS
IMAGINATION**



A creative and safe after-school learning environment

The technologies that are available at the CLUBHOUSE include:

3D Printer * Adobe Creative Cloud

Animation * Apple iMacs

Button Maker * T-Shirt Heat Press

Dell all-in-one Touch Screen Computers

Digital Media Equipment

Sewing Machine * Graphic Design

Movie Production with Green Screen

Project Gallery Boards

Recording Studio with Musical Instruments

Robotics * Cameras

Drone * Makey-Makey Station

In addition, Best Buy's partnership with The Clubhouse Network will give participants access to a global community of teens in over 100 clubhouses in 20 countries, allowing them to share their projects with teens around the world.



FOR YOUTH AGE 12- 18



MEMBERSHIP IS FREE

www.wccs.edu

3000 Earl Goodwin Parkway

334-876-9310